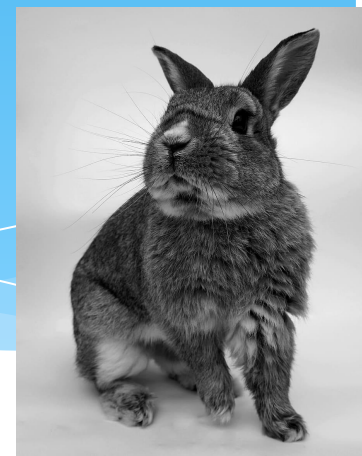


# Welcome Rabbit Class Meeting

[www.milborne.dorset.sch.uk](http://www.milborne.dorset.sch.uk)

@MilborneSchool



# The First Two Weeks

- \* **School day starts at 8:55**
- \* **Arrive from 8:45am**
- \* Help your child register themselves and find their peg
- \* Join them in the classroom and help them find something they would like to play with
- \* Parents are welcome to stay until 9:15am for the first week
- \* **Distressed children**
- \* **Timetable for the first week**
- \* 2 Exploring sessions, separated by snack, play, PE and story
- \* Small group adult directed activities
- \* Lunch at 12:00
- \* Home time 3:00

# The Third Week Onwards

- \* **School day starts at 8:55**
- \* **The children must be in the classroom and ready to start school at 8:55**
- \* Please encourage the children to take responsibility for their own belongings and put them on their peg, water bottle in the tray and self register independently.
- \* Any messages for the class teacher
- \* Parents say goodbye so that the children are ready to start their day.
- \* **Distressed children**
- \* **Timetable from the third week onwards**
- \* A phonics and a PE session, separated by snack and play time, concluding with a mathematics session
- \* Whole class inputs and small group adult directed activities
- \* Lunch 12:00-1:00
- \* Exploring and Child initiated learning
- \* Home time 3:00

# Security: Health and Safety

- \* **Absences:** Please call the school office or send an eSchool message before the start of the day
- \* **Scooters and bikes:** Please leave these in the bike park and scooter mushroom. Children should not be riding them in the playground before or after school
- \* **Before school:** Please wait until the Foundation Stage gate is open.
- \* **After school:** Please leave a message with the class teacher in the morning, or call the school office, if someone different will be collecting your child from school
- \* **Play equipment:** The climbing frame and slide are available to play until 3:10 but FS outdoor area is not for use before or after school, sorry
- \* **Problems or concerns:** Call the office or use eSchools to make and appointment to see your child's class teacher: we take all concerns and problems very seriously

# School Uniform

Items may be purchased on line through School Trends website and are embroidered with the school's logo.

- \* **Blue and white**

Blue jumper (with school badge)

White T-Shirt (with school badge)

Black or grey trousers, skirt, dress, pinafore

Summer dress: blue

- \* **Shoes, socks and wellington boots**

Black school shoes

Black, white or grey socks

- \* **No jewellery: small stud earrings**

- \* **Spare pants and socks in their PE bag**

- \* **Book bag:** Reading book and reading record, letters, sound scrapbooks and maths game

- \* **Please label every item with your child's name**

# PE Lessons and Kit

Items may be purchased on line through School Trends website and are embroidered with the school's logo.

- \* In the Autumn Term daily; In addition to storycise twice per week
- \* In the Spring and Summer Term focus day of PE and Outdoor Education; In addition to storycise and a second PE lesson

- \* **Indoor**

White T-shirt

Navy blue shorts

- \* **Outdoor**

- \* Navy blue jumper

- \* Navy blue jogging trousers

- \* Trainers

- \* **PE bag**

- \* **Please label every item with your child's name**

# The Curriculum

The Early Years  
Foundation Stage  
(EYFS)

## Our English and Maths Programmes

- \* Talk for Writing
- \* Guided Reading
- \* Letters and Sounds with Jolly Phonics Actions and Stories
- \* Singapore Maths
- \* Open mornings and workshops throughout the year
- \* Child initiated learning

Curriculum overview: [www.milborne.dorset.sch.uk](http://www.milborne.dorset.sch.uk) on the class home page

Characteristics of Effective Learning
<b>Playing and exploring – engagement</b>  Finding out and exploring Playing with what they know Being willing to 'have a go'
<b>Active learning – motivation</b>  Being involved and concentrating Keeping trying Enjoying achieving what they set out to do
<b>Creating and thinking critically – thinking</b>  Having their own ideas Making links Choosing ways to do things

Area of Learning and Development	Aspect
<b>Prime Areas</b>	
Personal, Social and Emotional Development	Making relationships
	Self-confidence and self-awareness
	Managing feelings and behaviour
Physical Development	Moving and handling
	Health and self-care
Communication and Language	Listening and attention
	Understanding
	Speaking
<b>Specific areas</b>	
Literacy	Reading
	Writing
Mathematics	Numbers
	Shape, space and measure
Understanding the World	People and communities
	The world
	Technology
Expressive Arts and Design	Exploring and using media and materials
	Being imaginative

# Being Prepared: How you can help at home

In class we have been practising doing the following tasks and activities independently. Ask your child to 'have a go' and practise these at home:

- \* Put his/her coat on and do it up
- \* Turn clothes the right way around
- \* Recognise his/her own name
- \* Dress without help
- \* **Manage in the toilet: use the toilet independently**

Ask to go! The children will be allowed to go at any time

- \* Wash his/her hands
- \* Make his/her needs known: tell an adult
- \* Tidy toys away
- \* Washing up plate and cup when finished snack
- \* Scrape plate when finished eating lunch



# Home School Communication

- \* **Parent consultation** - Once a term
- \* Half termly class newsletters
- \* Daily face-to-face communication
- \* Email
- \* eSchools Messages: Download eSchools app
- \* Website tabs and links (inc. calendar)
- \* Class home page
- \* Twitter
- \* Tapestry

# Questions?

We hope that you and  
your children will enjoy  
being a part of Milborne  
St Andrew First School!